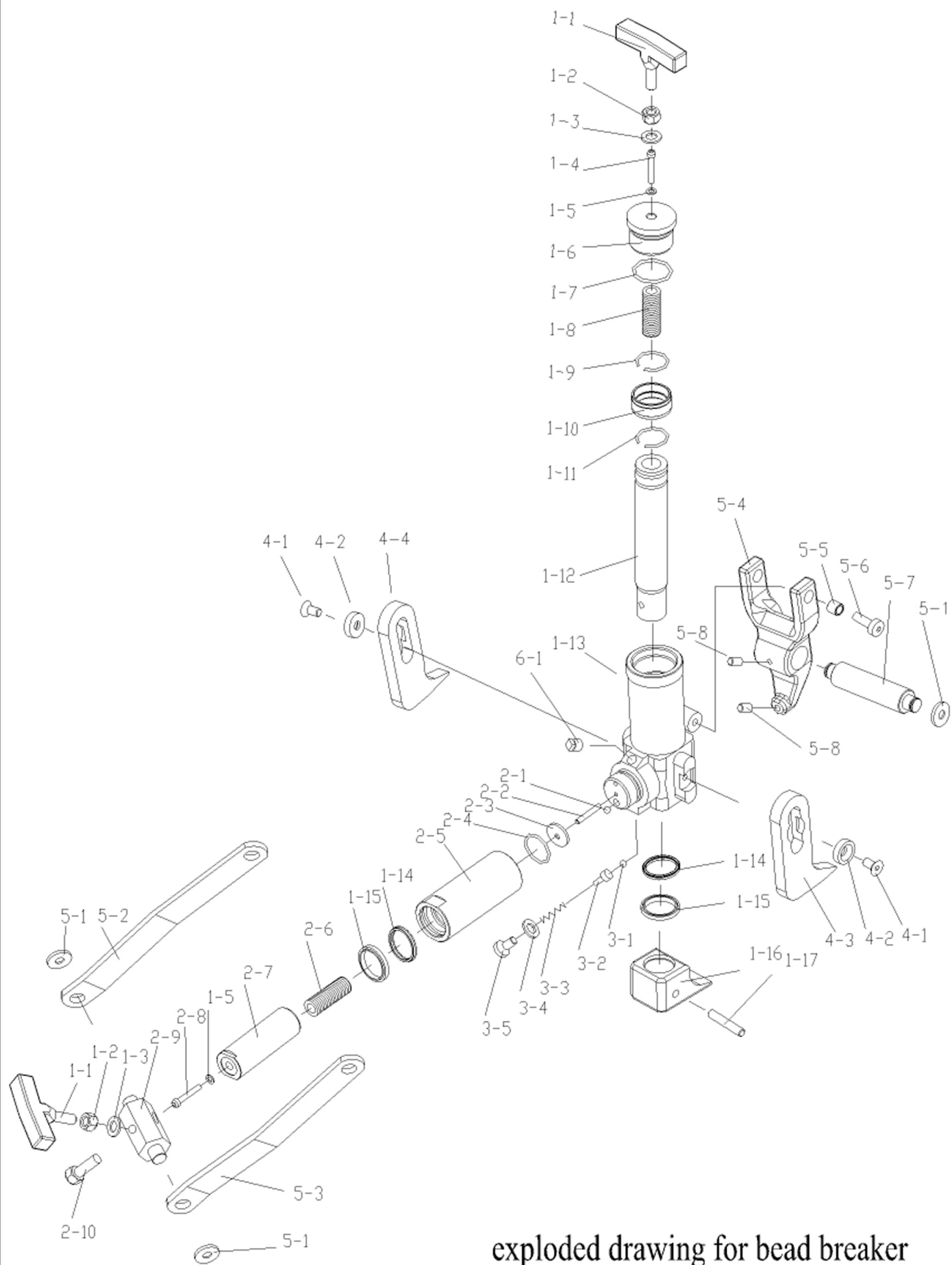


Parts List of Bead breaker

| Item No. | Description | Q'TY | Item No. | Description | Q'TY | Item No. | Description | Q'TY |
|----------|------------------|------|----------|---------------|------|----------|----------------------|------|
| 1-1 | handle | 2 | 1-16 | extrusion leg | 1 | 3-4 | Φ12 copper washer | 1 |
| 1-2 | M12 nut | 2 | 1-17 | pin | 1 | 3-5 | M12×20 screw | 1 |
| 1-3 | Φ12 washer | 2 | 2-1 | Φ6 steel ball | 1 | 4-1 | M10×15 screw | 2 |
| 1-4 | M5×50 screw | 1 | 2-2 | M6×30 screw | 1 | 4-2 | bushing | 2 |
| 1-5 | Φ5 copper washer | 2 | 2-3 | washer | 1 | 4-3 | left foot | 1 |
| 1-6 | cylinder cap | 1 | 2-4 | o ring | 1 | 4-4 | right foot | 1 |
| 1-7 | o ring | 1 | 2-5 | cylinder | 1 | 5-1 | snap ring | 4 |
| 1-8 | spring | 1 | 2-6 | spring | 1 | 5-2 | connection rod left | 1 |
| 1-9 | snap ring | 1 | 2-7 | piston rod | 1 | 5-3 | connection rod right | 1 |
| 1-10 | bushing | 1 | 2-8 | M5×70 screw | 1 | 5-4 | claw | 1 |
| 1-11 | snap ring | 1 | 2-9 | joint block | 1 | 5-5 | bushing | 2 |
| 1-12 | piston rod | 1 | 2-10 | M12×45 bolt | 1 | 5-6 | M10×25 screw | 2 |
| 1-13 | cylinder body | 1 | 3-1 | Φ8 steel ball | 1 | 5-7 | shaft | 1 |
| 1-14 | Y-seal | 2 | 3-2 | ball seat | 1 | 5-8 | screw | 2 |
| 1-15 | bushing | 2 | 3-3 | spring | 1 | 6-1 | plug | 1 |



exploded drawing for bead breaker